

14500-5

TITLE

PUSHBUTTON BOOT

REV.

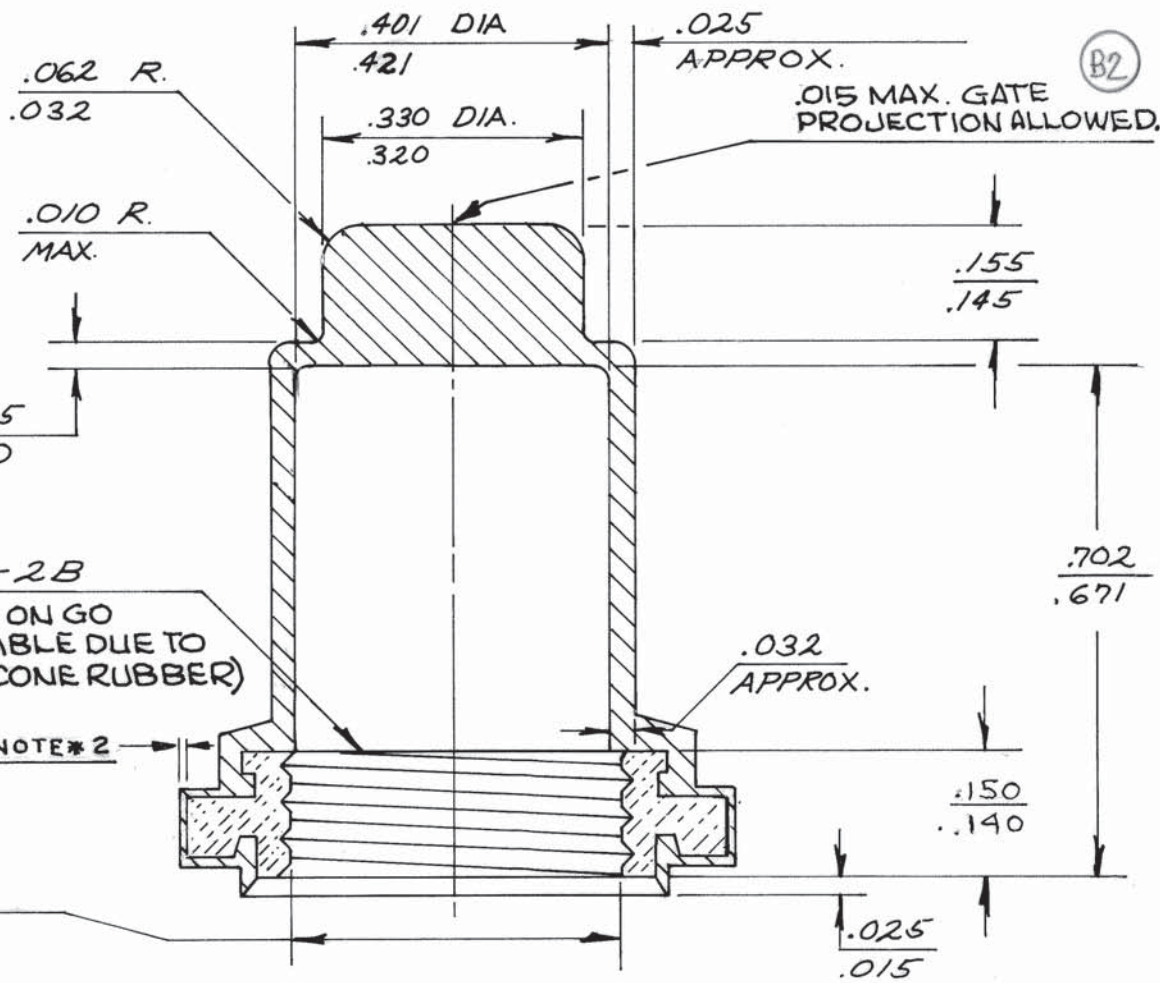
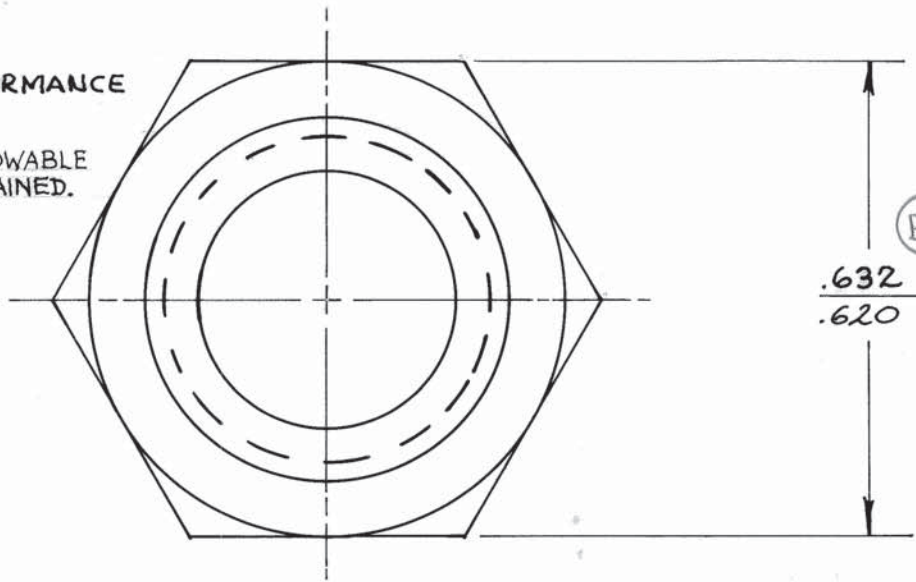
F

14500-5

NOTES:

1. CERTIFICATE OF CONFORMANCE REQUIRED

2. SILICONE OVERMOLD ALLOWABLE HEX DIM. MUST BE MAINTAINED.



1/16-32 NS-2B
(SLIGHT DRAG ON GO GAGE ALLOWABLE DUE TO EXCESS SILICONE RUBBER)

B3

SEE NOTE # 2

C

.421
.417

14500-5 BOOT-SILICONE RUB-R-GLAS PER SPEC. ZZ-R-765 CLASS III, DUROMETER 50-60
NUT-BRASS PER SPEC. QQ 8626, COMP 22, NICKEL PLATE PER SPEC. QQ N290 CLASS II

PART NO. MATERIAL

BY J. PARENT 10-3-78
CH. [Signature] 10-9-78
ENG. [Signature] 10-6-78



TEXAS INSTRUMENTS
INCORPORATED
ATTLEBORO, MASS., U.S.A.

KLIXON
CONTROL PRODUCTS
DIVISION

DWG. SIZE
A

14500-5

CODE IDENT NO. 82647

DIM. .401-.421 WAS .410-.430
CERAMIC RUM 8-17-94
DIM .421-.417 WAS .426-.417
KG

F

150/140 WAS .174/.168
ADD. NOTES 11-2-93
CERAMIC RUM 11-18-93
SEE CN FOR CHANGES
ECN M17142 RUM4-12-94

D

SEE C.N. 2-4-83
Q23/BO
DIM WAS 9/17-92
CE93887 9/1-84 9/1-84

B

1ST ISSUE 7-27-9
CR 77000 10-3-78 DP
ADDED HARDNESS SPEC.
278513 R 7/8/79 1/21

1

A

Q2-3 MS-3 Q1 M21 P35 P2-1